

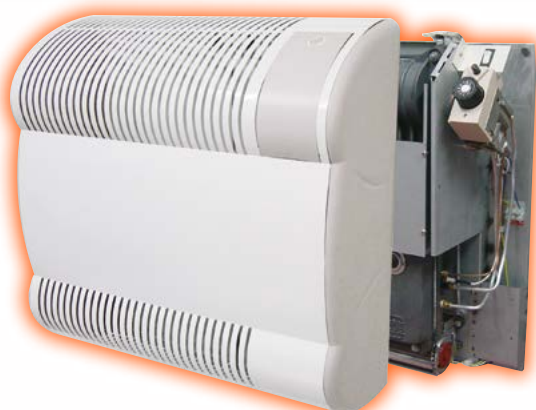


KING Gas fired radiators



- » 3 cast iron models and 1 stainless steel
- » 10 years guarantee on combustion chamber and burner
- » Heating of domestic areas such as offices and shops

AIR HEATING



KING with cast iron exchanger from 2 to 4,9 kW

TECHNICAL FEATURES "CAST IRON KING"

Gas radiator CE certified equipped with:

- » Exchanger made of cast iron with finned external surface inspectionable
- » Stainless steel atmospheric burner (natural gas or LPG):
 - Thermostatically controlled gas valve with piezoelectric ignition (KING 21)
 - Gas solenoid valve with electronic ignition and ionization flame control (for FE models)
- » Tangential fan (for FE models) with 2 speeds and possibility of power off and ignition through thermostat
- » Casing painted with epoxy powders, with fins and slots placed in the upper side and front drilling. Easy to clean.
- » Fumes exhaust/Air intake terminal windproof
- » Coaxial pipes for fumes and combustion air, length 500 mm
- » Mounting template, fixing screws, manual, packaging



KING with stainless steel exchanger from 7,2 kW

TECHNICAL FEATURES "STAINLESS STEEL IRON KING"

Gas radiator CE certified equipped with:

- » Exchanger made of stainless steel with very high yields
- » Electronic ignition, Room thermostat placed inside the unit, ionization flame control, CE certified, fan ignition through thermostat, Safety thermostat
- » Sucked burner with torch, conceived and patented by Systema S.p.A.
- » Humidification tank
- » Centrifugal fan with 2 speeds.
- » Fumes exhaust centrifugal fan with silent operation
- » Casing painted with epoxy powders
- » Horizontal and vertical exhaust up to maximum 5 m



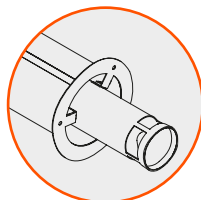
TECHNICAL DATA

Models			BALANCED FLOW PILOT FLAME THERMOCOUPLE SERIES MODELS		FORCED FLOW ELECTRONIC SERIES MODELS		
			NOT-VENTILATED		FORCED FLOW AND VENTILATED		
			K21		K30FE	K50FE	K70FE
Rated heat flow	kW		2	3	4,9	7,2	
Working heat output	kW		1,84	2,76	4,45	6,64	
Combustion efficiency *	%		91,8	92,1	90,7	92,2	
Efficiency class			1	1	1	1	
Max fuel consumption (15°C-1013 mbar)	Nat. gas G20	m ³ /h	0,21	0,32	0,526	0,76	
	Butane G30	kg/h	0,158	0,237	0,389	0,568	
	Propane G31	kg/h	0,155	0,233	0,383	0,559	
Electrical power supply			--	230/50			
Electrical power (absorbed)	W		--	71,5	71,5	129	
Treated ambient air flow	m ³ /h		--	150	260	470	
Heated ambient volume	m ³		36	58	102	154	
Fan speed number			--	2	2	2	
Dimensions	Width	mm	560	560	730	880	
	Height	mm	615	615	615	710	
	Depth	mm	225	225	225	330	
Weight	kg		31	33	52	44	
Gas Fitting Diameter	Inc. (")		1/2"-M	1/2"-F	1/2"-F	1/2"-F	
Air-fume coaxial pipe diameters	Aria	mm	100	60	60	100	
	Fumi	mm	60	38	38	60	
Air-fume max length (Coaxial pipes)	mm		500	5000	3000	5000	
Type of equipment			C11	C13			

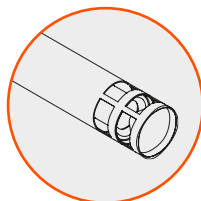
* Standard conditions

Accessories

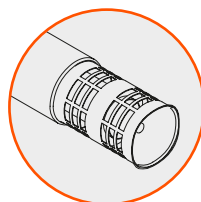
**Air/Fumes terminal
King K21**
STANDARD INCLUDED



**Air/Fumes terminal
King K30FE and K50FE**
STANDARD INCLUDED

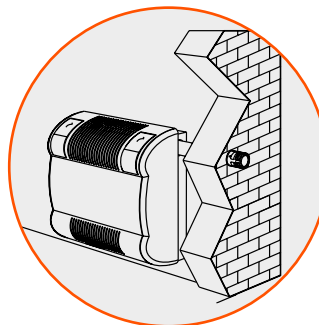


**Air/Fumes terminal
King K70FE**
STANDARD INCLUDED

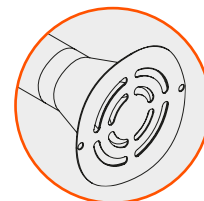


Optionals

**LATERAL DISCHARGE Kit
K30FE and K50FE** OPTIONAL



**Wall level external wind
proof Air/Fumes terminal
King K30FE and K50FE**
OPTIONAL



**LATERAL DISCHARGE Kit
K70FE** OPTIONAL

